

# HORIZON

— FOR THE YACHT OWNER WHO DEFINES DREAMS —

## *THE COMPETITIVE EDGE*

*Atech leads with cross-industry innovation*

*SATORI and the Path to Enlightenment*

## PARABOLIC

How Bitcoin Brought One Owner His First Yacht

*Discover Airlie Beach, the gateway to the  
Whitsunday Islands*



*The Chief  
Onboard the new  
FD90 Tyee*



//

*OUR OWNERS DON'T CHASE THEIR  
DREAMS, THEY DEFINE THEM*

*Horizon owners are experienced, discerning yachtsmen who understand that  
building with Horizon is a collaboration of experts, where innovation is valued and  
functionality and performance are paramount.*

*Let's Define Your Horizon.*

//





CEO MESSAGE

CRAFTING  
A CULTURE

**To become and remain a successful yacht builder within this** market of dynamic competition requires the integration of many components. As a manufacturer, we continuously pursue the creation of the most competitive and leading-edge products, while as a shipyard, we aim for sustainable development and the implementation of advanced technologies. Now, three decades after establishing our yacht production business, the markings of success are visible, from our newly expanded facilities to our product design and development expertise, to our financial capabilities. In my 30 years of experience, however, there is one mark of success that cannot be easily measured, as it is an invisible property that provides the foundation for our achievements and is the strength that drives us forward. This mark is found in our human resources and in the Horizon company culture that maintains our common values and goals.

As a manufacturing and technology-oriented company, we are proud of the expertise and knowledge of our senior management team, most of whom have engineering backgrounds and all with either significant yacht building or yacht design experience. It is such a pleasure to watch the evolution of the company culture that we create while working together to honor the commitments we make to our customers:

- Complete each yacht within an efficient timeframe with seamless teamwork.
- Provide each client a comprehensive, informative design plan in a timely manner.
- Provide professional advice on technical specifications while proposing the optimal solution.
- Predict and manage the costs associated with customizations within a reasonable range.
- Provide prompt customer service both during construction and after delivery.



I believe there is no such thing as a “perfect” yacht on the market that suits all tastes and lifestyles, but rather, “optimization” for individual projects is achievable. This is the core value that distinguishes Horizon. In this diverse world, some people want speed, others want range. Some like minimalist designs while others like the traditional – even vintage – aesthetic.

Our goal is to offer the best value for the best product for each customer. At Horizon, we have created a company culture that regards the yacht owner as not just a valued client, but as a permanent member of the Horizon family, regardless of whether they are first-time owners or repeat customers.



吴佳扬

John Lu  
CEO of Horizon Group

HORIZON

Founded in 1987, Horizon Yachts has celebrated 30 years as one of the largest luxury yacht builders in the world as well as the number one builder in the Asia Pacific region. During these three decades, Horizon has delivered over 855 luxury yachts, with more than 220 of these over 80 feet in length. Popular models ranging from 52 to 150 feet include motor yachts, superyachts, power catamarans, expedition yachts, and fast displacement motor yachts.

PUBLISHER  
John Lu

MARKETING DIRECTOR, HQ  
Joey Lu

MARKETING DIRECTOR, U.S.  
Elise Moffitt Caulder

EDITORIAL COORDINATORS  
Michelle Huang, Celeste Chang, Andrew Hsu, Lily Li, Lisa Yang

SUPERYACHT CREATIVE

EDITORIAL DIRECTOR  
Rebecca Cahilly-Taranto

CREATIVE DIRECTOR  
Richard Taranto

All particulars in this magazine are believed to be correct but cannot be guaranteed. No part of this publication may be reproduced or duplicated without written permission from Horizon Yachts.  
©Horizon Yachts 2021. Advertising opportunities: marketingcenter@horizonyacht.com. Letters to the editor: marketingcenter@horizonyacht.com.

The Best Just Got Better



THE TRI-DECK FD110

VOLUME. VIEWS. VERSATILITY.

Head-turning style, impressive volume and a new tri-deck configuration define the FD110, a five-stateroom yacht designed with a High-Performance Piercing Bow and hull design and built with the latest in advanced composites technologies. From interior volume to exterior views to all-around versatility, the best just got better with the tri-deck FD110.

FD: THE WORLD'S FASTEST GROWING YACHT SERIES

USA  
+1 561 721 4850  
horizonyachtusa.com

EUROPE  
+34 971 673 508  
horizonyachteurope.com

AUSTRALIA  
+61 7 5577 9009  
horizonyachtaus.com

  
**HORIZON**  
WORLD CLASS YACHTS



# // CONTENTS

**2** CEO Message

## NEW WAVE

**8** New Launches

*Horizon's recent yard expansion has coincided with expansions in both yacht series and global markets, with another six new builds leaving the sheds that represent both.*

**14** Atech Composites – The Competitive Edge

**20** Feature Yacht: Horizon FD90 Tyee

*The 20th hull of the popular FD90 model is also the first FD yacht delivered to Southeast Asia.*

### HORIZON FD80 *Parabolic*

*SOLD TO A FIRST-TIME YACHT OWNER,  
THE NEW FD80 SKYLINE HAS ITS GENESIS  
IN THE BITCOIN CRYPTOCURRENCY.*



## HORIZON LIFE

**46** The Path To Enlightenment

*A growing extended family led Ira and Wendy Levenshon from their 58ft Horizon to a V74, and then into their latest Satori, a Horizon E88, aboard which they've just completed their 13th Miami - Maine cruise.*

**56** Captain's Review

**60** Owner Perspective: The FD87 *Slo Gin*

**61** Calendar of Horizon Global Events

**62** 2021 Fort Lauderdale International Boat Show

**64** Destination Spotlight: Airlie Beach, Australia

*As the gateway to the Whitsunday Islands and the Great Barrier Reef,*

*Airlie Beach is the perfect base from which to explore these magnificent wonders.*



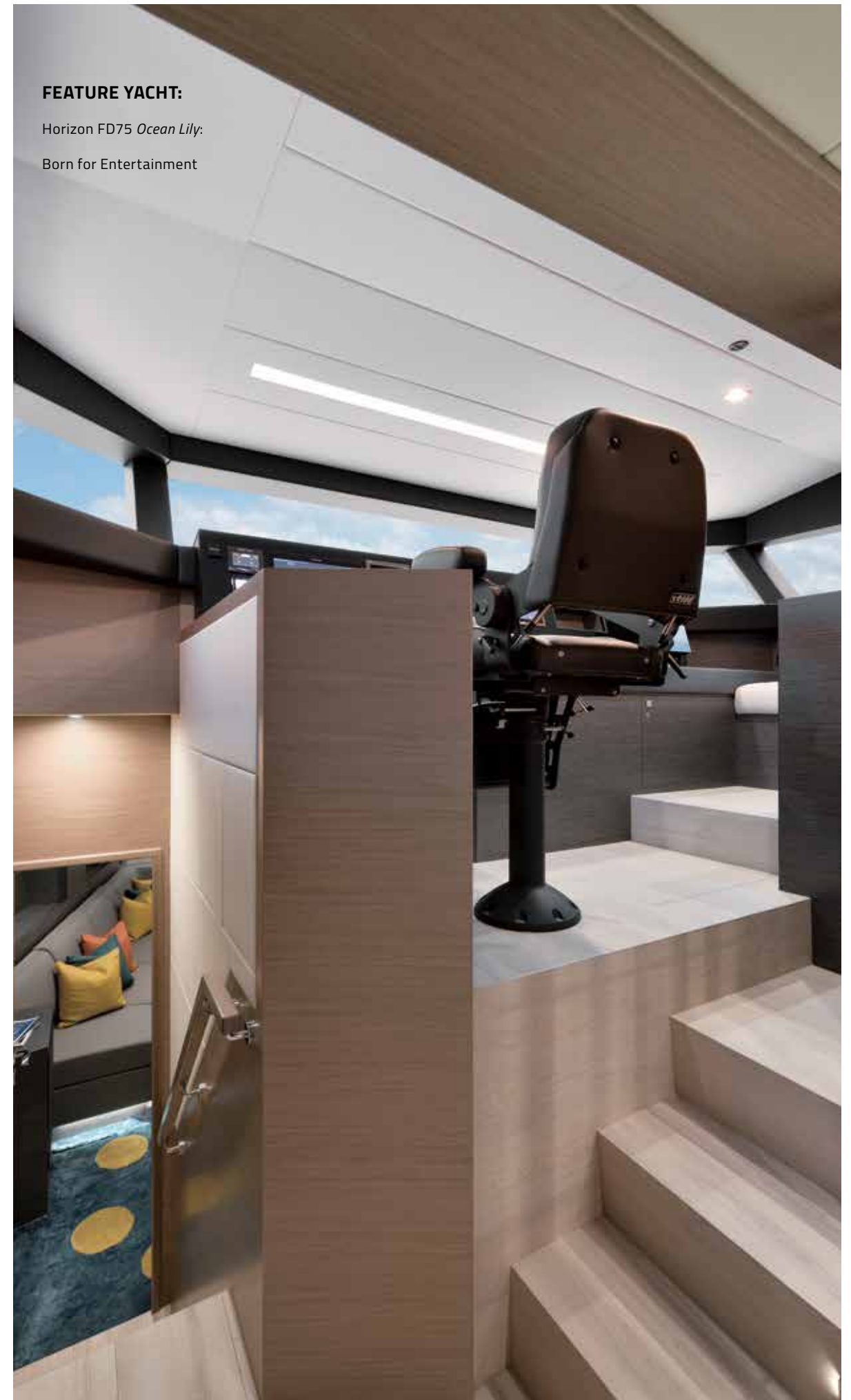
**ON THE COVER**  
Christened *Tyee*, this FD90 Skyline features the same teak decking specified for all exterior areas.

# 36

### FEATURE YACHT:

Horizon FD75 *Ocean Lily*:

Born for Entertainment





PAID ADVERTISEMENT



**ARITEX**  
*Essence of Luxury*

**Customized Stainless Steel Solutions**  
[www.aritex.com.tw](http://www.aritex.com.tw)

# NEW WAVE

ALL OF THE LATEST NEWS FROM THE YARDS



©JACKSON KILPATRICK

NEW LAUNCHES // TECHNOLOGY AND INNOVATION // FUTURE DESIGN CONCEPTS →

DEFINE YOUR HORIZON



# New Launches

Horizon's recent yard expansion has coincided with expansions in both yacht series and global markets, with another six new builds leaving the sheds that represent both.

SOLD TO AN ASIAN OWNER

## FD90 Skyline Hull 20



Two milestones were achieved with the launch of the latest FD90 Skyline. Not only is it the 20th hull of this popular Fast Displacement (FD) model, it is the first FD Series yacht to be delivered to Southeast Asia.

Christened *Tyee*, this FD90 Skyline features five state-rooms with an enclosed skylounge configuration. The main deck follows the traditional layout, with a spacious aft deck leading into an open main salon with dayhead, and formal dining, galley and master stateroom forward. The dining



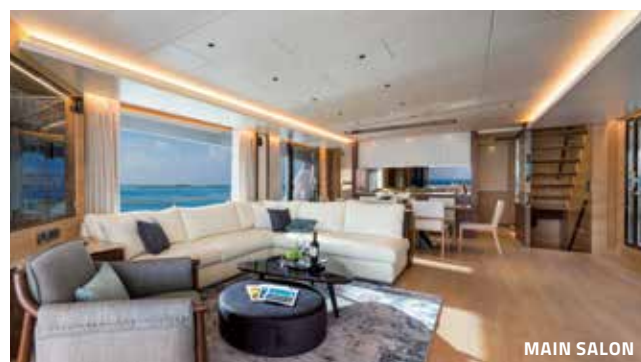
SKYLounge

area is flanked by sliding glass doors to port and starboard that allow for semi-al fresco meals.

Four additional guest staterooms are located on the lower deck, and comprise a VIP forward, a convertible twin with Pullman to port, and mirrored queen VIPs amidships. Accommodations for six crew members are situated aft.

On the upper deck, the pilothouse can be closed off from the enclosed skylounge, and a spacious boat deck with tender stowage offers space for entertaining, as does the foredeck area.

Delivered on schedule, *Tyee* was sold through Phuket-based Derani Yachts and is the first Horizon build for this owner. Read the full feature on the brand new FD90 on page 20.



MAIN SALON



SOLD TO AN AMERICAN OWNER

## FD80 Skyline Hull Five



MAIN SALON

Sold during construction to a first-time yacht owner, the fifth hull of the FD80 model has launched. Named *Parabolic*, the yacht features an enclosed skylounge configuration with a full-beam master stateroom on the main deck and three guest cabins on the lower deck, with crew quarters for four and a beach club situated aft.

The FD80 model is known for its plentiful deck areas, and *Parabolic's* owner customized the upper deck layout to accommodate two jet skis on the boat deck aft along with a six-person Jacuzzi with counter seating and a bar area. The foredeck is fitted with a large sunpad and U-shaped seating with dinettes for enjoying the view at anchor. A large dining table for eight occupies the main deck aft, while additional dining can be enjoyed at the

convertible dining table in the main salon.

*Parabolic* will be on display at the Fort Lauderdale International Boat Show October 27 – 31. Upon delivery, the owner plans to cruise the U.S. East Coast and Caribbean. Read the full feature on *Parabolic* on page 28.



MAIN DECK AFT





SOLD TO AN ASIAN OWNER

## FD75 Hull Three



MAIN SALON

Commissioned for a Taiwanese owner based in Singapore, the FD75 Hull Three features a uniquely customized layout designed for accommodating and entertaining parties of up to 20 guests.

From the large table designed to facilitate both meetings and dining on the aft deck to the forward-most Karaoke room on the main deck that converts into a sleeping arrangement for four, the yacht has been specified with a state-of-the-art entertainment system and disco lighting throughout.

The deck furniture is freestanding and multifunctional and a dumbwaiter services the open flybridge from the galley, while hot pot stations have been installed on the main and upper decks. The lower deck houses three staterooms designed to sleep multiple guests, and a crew cabin and mess area is situated at the stern. Read the full feature on this latest FD75 on page 36.



MASTER STATEROOM



DINING AREA / GALLEY

**LEFT**  
The expansive salon flows into an open galley and country kitchen arrangement forward.



PILOTHOUSE

Christened *Valiant*, the newest E81 has been designed to accommodate her experienced owners' cruising lifestyle, with spacious exterior areas, a three-stateroom-plus-office layout and a modern interior décor.

On the main deck, the aft deck features a fixed dining table while the expansive salon flows into an open galley and country kitchen arrangement forward, with a portside dayhead. Walkaround side decks lead to the foredeck, for which the owners specified a spacious entertainment area on the bow to include a large U-shaped settee, sun pad and a unique covered storage area.

While the standard E81 arrangement offers four state-rooms on the lower deck, the owners opted for a full-beam master suite with a refined head and shower, a large VIP ensuite forward and a twin guest stateroom to starboard. In the space normally occupied by the fourth stateroom, the owners specified an office/library with a built-in workspace and storage.

To accommodate longer cruises along the U.S. eastern seaboard and Bahamas, crew quarters for two are situated aft of the engine room. To increase functionality in this area, the owners customized stairway access to the crew quarters and engine room from the aft deck.

*Valiant* will be on display at the Horizon Yacht USA showcase during the Fort Lauderdale International Boat Show (See more on page 62.) October 27 – 31, 2021.

For more information on any of these recent launches or to discuss new build opportunities, please contact Horizon Yacht USA at +1 561-721-4850 or email [sales@horizonyachtusa.com](mailto:sales@horizonyachtusa.com).

SOLD TO AMERICAN OWNERS

## E81 Hull Two





DINING AREA / GALLEY



SOLD TO AMERICAN OWNERS

## PC60 Hull 24



MAIN SALON

**ABOVE AND RIGHT**  
This build features an open salon layout with three large staterooms.

GALLEY / DINING AREA



BUILT ON SPEC

## PC52 Hull 21



MASTER STATEROOM



HELM STATION

Built on spec, the latest build of the highly popular PC52 model will be on display at the Fort Lauderdale International Boat Show, October 27 – 31, 2021. This spacious yacht features a three-stateroom layout accommodating up to six guests, with the entire starboard hull dedicated to the owners.

The main deck offers al fresco dining on the aft deck with a fully equipped galley amidships and a main salon forward. The open flybridge features a large settee and BBQ area aft of the helm. Outfitted in neutral tones with high-end finishes, this latest PC52 is ready for her next owner!



SISTERSHIP

The latest PC60 has launched and will be delivered to her Florida-based owners who are experienced, longtime boaters. Their build features an open salon layout with three large staterooms situated in the hulls – with the master suite encompassing the starboard hull.

The open flybridge features a large L-shaped settee and dinette as well as a bar area with three stools aft of the helm station. This PC60 will also be on display during the show, with The Powercat Company, the Horizon Power Catamaran series representatives. For more information on these latest PC launches or other Horizon Power Catamaran models, please contact Richard Ford at +1 888 839 3071 or email [richard@powercatco.com](mailto:richard@powercatco.com). ➡



# THE COMPETITIVE EDGE

*Cross-industry innovation propels Horizon Group's advanced composites division Atech Composites to the leading edge.*



**Not only does Horizon Group's Atech Composites** produce the hull, decks and superstructure of every Horizon yacht, the advanced composites specialists also provide Fiber Reinforced Plastic (FRP) components across multiple industries. Atech manufactures FRP products for a variety of industries ranging from marine to aviation

and including the national defense, transportation, infrastructure and offshore wind sectors. Continuous accumulation of these diversified manufacturing experiences has allowed Atech to translate its cross-industry knowledge into innovative technology that will continue to benefit future Horizon yacht builds. →



## FROM THE YACHTING INDUSTRY TO...

**RAIL CARS -****Fire Resistant Components for the Danhai and Ankeng Lines, New Taipei City**

In 2016, Atech began manufacturing the front end systems and interior FRP components for the 13 trains of the Danhai Light Rail line, part of New Taipei City's Department of Rapid Transit Systems. This was the first time that light rail trains would be manufactured and assembled in Taiwan. In 2018, Atech began manufacturing the front end systems and interior panels for the Ankeng Line's light rail transit. Atech and its partners jointly developed the resin used in the manufacturing process, which received EU pyrotechnic poison international standard (EN45545-2) approval and is the first fire-resistant resin incorporated in rail trains in Asia. More than 6,000 FRP components have been installed in 15 trains to date.



©NEW TAIPEI METRO CORPORATION

**AUTOMOTIVE -****Electric Carbon Race Car Body Shells for X-ing Mobility**

Customized technical development and support is a core area for Atech, which collaborated with manual race car manufacturer X-ing Mobility to develop stronger and lighter race car body shells. Through the application of specific raw materials and the unique automatic vacuum infusion process, Atech was able to reduce the weight of the body shells by nearly 30%.

**OFFSHORE WIND -****Nacelle and Spinner Covers for Vestas Wind Systems**

With 16 of the world's top 20 offshore wind locations being situated in the Taiwan Strait, the development of offshore wind power generation is an important area of focus for Taiwan. The materials that comprise spinner and nacelle covers are similar to the FRP materials used in yacht construction, as it is necessary to protect the offshore wind turbine systems from the external environment found at sea. In 2020, Atech's subsidiary - Fassmer Atech Composites Taiwan Ltd. (FACT) - signed a contract with world-leading Vestas Wind Systems for the local supply of nacelle and spinner covers for the company's V174 turbines. The covers will be produced at FACT's manufacturing facility in Kaohsiung, Taiwan.



©KAOHSIUNG CITY GOVERNMENT

**INFRASTRUCTURE -****Great Harbor Bridge Façade**

Unveiled in July 2021, the Great Harbor Bridge that connects Kaohsiung's Peng-lai Commercial Harbor area with the Pier-2 Arts Center is not only Taiwan's first pedestrian swing bridge but also the longest cross-harbor swing bridge in Asia. Atech constructed the two streamlined sections of roof façade that measure nearly 265 feet (80m) in length by 30 feet (8m) high and represent the imagery of a shell and a dolphin. The entire feat of construction measures nearly 360 feet (109.5m).

**THESE PAGES**  
Cross-industry research and production allows Atech to further refine the materials and processes used in yacht building.



## ENVIRONMENT -

### Innovating for Efficiency and the Environment

As global warming continues to cause widespread changes in the weather patterns and our daily life continues to be impacted, products that are eco-friendly and sustainable are not only future trends but necessities. Atech not only participates directly in the eco-friendly product movement by producing offshore wind turbine components that facilitate Taiwan's green power supply, its composite products for the transportation and yachting industries are integral components of lightweight designs, which lower fuel consumption. ➡



**THIS PAGE**  
Atech's innovations  
will serve to enhance  
environmental efforts  
in the future.



*Atech is currently conducting research and development in the area of electric motorcycles and buses, and believes that the people of Taiwan – and beyond – will be able to enjoy greener, more intelligent transportation in the near future.*



PAID ADVERTISEMENT



# HUNG SHEN PROPELLER

FPP • CPP & Shafting

## 宏昇螺旋槳

Newly Developed

End Plate Propeller (ENDP) 端板螺槳

Low Noise Low Vibration

Give you a more  
Comfortable yacht life



New Design Silent Submarine  
ENDP Propeller

**Hung Shen Propeller Co., LTD (Headquarter)**  
Tel: +886-8-869-0111 Fax: +886-8-869-0333  
info@hungshenprop.com www.hungshenprop.com

**HS Marine Propulsion LLC (U.S.A. Branch)**  
Tel +1 (228) 875-6111 Fax +1 (228) 875-6612  
Vice President: James Travis Marketing Manager: Jake Travis  
jtravis@hsmarineprops.com jake@hsmarineprops.com  
www.hsmarineprops.com

Patent  
Taiwan Pat. No. I515147  
U.S.A. Pat. No. US10,155,575B2  
Europe Pat. No. EP3508415A1  
Japan Patent Pending



# The Chief FD90

## FEATURE YACHT

*The 20<sup>th</sup> hull of the popular FD90 model is also the first FD yacht delivered to Southeast Asia.*

**In January of 2020, Horizon forged a partnership with Phuket,** Thailand-based Derani Yachts as the exclusive dealer of Horizon yachts throughout Thailand, Malaysia and Singapore. The partnership was born out of growing interest in yachting in this area of the world and was a beneficial venture for both due to the geographical proximity of the region with the Horizon yard.

Within the year, Derani sold Hull 20 of the FD90 model to an Asian owner. Launched and delivered in August, 2021, this latest FD90 Skyline was christened *Tyee*, meaning “Chief” or “Leader”—a name befitting this representative of Horizon’s continued global expansion.

Within her 23' 3" beam, *Tyee* features a five-stateroom layout with an enclosed skylounge configuration. A spacious aft deck with four love seats surrounding an expandable coffee table leads into the main salon, which features a dayhead and television aft to starboard and a lounging area highlighted by a corner glass cabinet, sumptuous L-shaped white leather sofa and coffee table with poof ottoman to port. White oak and walnut feature as the main woods →



Learn More About the  
FD90 Skyline Tyee







throughout the interior, and the elegant yet minimalist décor is further distinguished by floor-to-ceiling windows and white ash flooring.

Forward, the formal dining area is flanked by sliding glass doors to port and starboard that allow for semi-al fresco meals. To starboard, floating walnut stairs with LED-lit treads lead to the enclosed skylounge one deck above, while the galley to starboard is separated from the main dining area and outfitted in Cambria Britannica quartz. Furthest forward, the full-beam master stateroom encompasses the forward portion of the main deck and is fitted with spacious closets and a raised vanity/desk with a custom-made leather desk chair to starboard. The window to port features a built-in chaise longue with a leather cushion. The full-beam en suite features separate toilet and shower areas with dual sinks in between.



**THESE PAGES**  
From her expansive deck areas to her voluminous interior, *Tyee* boasts the space of a much larger yacht.







**THESE PAGES**  
From the inviting foredeck area to the enclosed skylounge, al fresco and semi-al fresco living is offered throughout.



SKYLounge

## Inspired Features



teak decking  
specified for all  
exterior areas



privacy door between  
wheelhouse and  
skylounge



custom wenge  
games table



BRIDGE DECK





Four additional guest staterooms are located on the lower deck and comprise a VIP forward, a convertible twin with Pullman to port, and mirrored queen VIPs amidships. Accommodations for six crew members are situated aft of the engine room housing the twin CAT C18A engines of 1,136hp each.



On the upper deck, the wheelhouse with dual helm chairs can be closed off from the enclosed skylounge, which features a large U-shaped settee and a wenge games table to accommodate one of the owner's favorite pastimes. The spacious boat deck houses the tender with plenty of room for sunbathing and entertaining, while the foredeck features a sunpad and U-shaped settee with sliding dinettes topped with Mt. Jade Meganite. This area features the same teak decking specified for all exterior areas and can be shaded with a sun awning.

As Horizon continues to expand its global reach, the owner of Tyee will be enjoying the pristine waters surrounding Phuket aboard his beautiful new yacht. ➡



**THESE PAGES**  
Tyee houses five ensuite staterooms, including a spacious on-deck master.



CREW QUARTERS



MASTER STATEROOM



## Specifications

**LOA**  
90' (27.45m)  
**Beam**  
23'3" (7.11m)  
**Series**  
Fast Displacement (FD)  
**Interior Design**  
Horizon Yachts  
**Exterior Styling**  
Cor D. Rover  
**Engines**  
2 x CAT C18A 1,136hp



FEATURE YACHT



**THESE PAGES**  
A spacious, high-volume interior and large windows highlight the main salon, which features a convertible dining table.

*Sold to a first-time yacht owner, this new FD80 Skyline has its genesis in the Bitcoin cryptocurrency.*

# ASSET APPRECIATION





***“One of the most exciting asset classes of the past ten years*** has been the cryptocurrency Bitcoin, which has had multiple parabolic price moves in the past and is currently in the mid-cycle of another,” says the owner of the brand new FD80 Skyline. The American owner proudly credits the profits gained by holding Bitcoin through these parabolic price movements with his ability to purchase his first yacht, which he has aptly christened, *Parabolic*.

Offered between the FD75 and FD90 models, the FD80 appeals to active yacht owners seeking spacious accommodations and plentiful deck areas.

# PARA<sup>₿</sup>OLIC

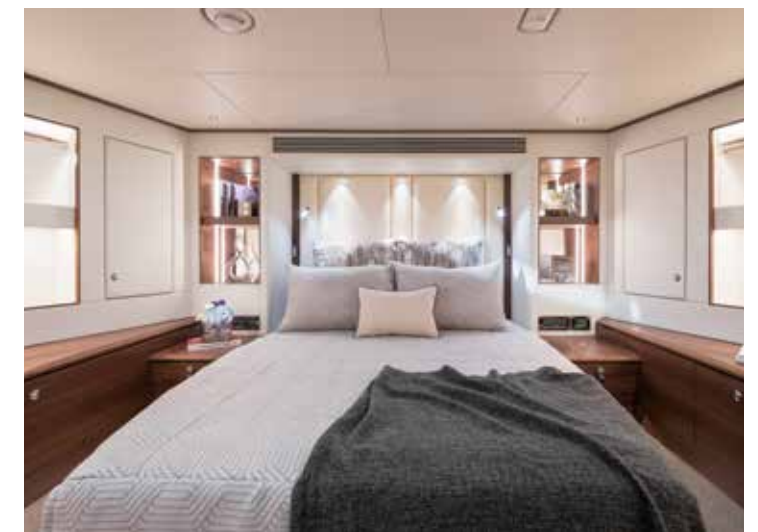
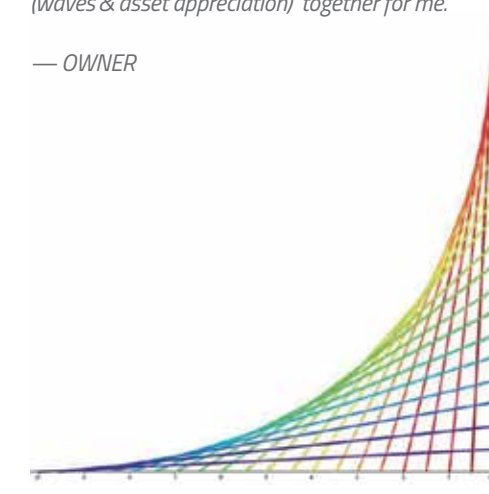
## WHAT'S IN A NAME



*“A parabola is the graph (= drawing) of a quadratic equation. Parabolic curves are naturally occurring and found throughout nature. You can generate a parabolic curve using only straight lines. One of*

*the common occurrences of the parabola is found in ocean waves. We also find parabolic curves within the price movements of stocks and other assets. One of the most exciting asset classes of the past ten years has been the cryptocurrency Bitcoin which has had multiple parabolic price moves in the past and is currently in the mid-cycle of another. The name Parabolic with the Bitcoin symbol as the B brings these naturally occurring parabolas as individual and unrelated elements (waves & asset appreciation) together for me.”*

— OWNER





**THESE PAGES**

The owner selected a bright and cheerful soft goods package with blue, green and coral red hues complemented by decorative forms representing the ocean, earth, passion and geometry.



*The interior soft goods package is inspired by the Ginkgo Tree and symbolizes life's infinite cycle that is peppered by the unexpected.*



Sold during construction, *Parabolic* features an enclosed skylounge configuration with a full-beam master stateroom on the main deck and three guest cabins on the lower deck, with crew quarters for four and a beach club situated aft.

Plentiful deck areas distinguish the FD80 from any competition, and *Parabolic's* owner customized the upper deck layout to accommodate two jet skis on the boat deck aft along with a six-person Jacuzzi with counter seating and a bar area. The foredeck is fitted with a large sunpad and U-shaped seating with dinettes for enjoying the view at anchor. A large dining table for eight occupies the main deck aft, while additional dining can be enjoyed at the convertible dining table in the main salon.

Throughout the interior, light anegre wood with walnut highlights is complemented by expansive windows and a light ash flooring for a bright and airy feel. The main salon features a dayhead and seating area with an off-white leather sofa to port and a fold-down television, console and convertible dining table to starboard. The galley is situated forward to port and features privacy glass and a bar area with three stools.





**THESE PAGES**  
One of the hallmarks of the FD80 design is plentiful deck areas, and *Parabolic* showcases this aspect beautifully.



### Specifications

**LOA**  
80'7" (24.56m)  
**Beam**  
22' 8" (6.91m)  
**Series**  
Fast Displacement (FD)  
**Interior Design**  
Horizon Yachts  
**Exterior Styling**  
Cor D. Rover  
**Engines**  
2 x MAN D2868LE466 V8 1,300hp

The master stateroom occupies the forwardmost area on the main deck, while two VIP en suites and a convertible twin comprise the lower deck accommodations. The anegre and walnut finish continues throughout these areas as well.

On the topmost deck, the customized enclosed skylounge configuration houses the wheelhouse with twin helm chairs forward and an L-shaped seating area facing a pop-up television and storage just aft.

The owner worked with Horizon's in-house design team to select a bright and cheerful soft goods package in a theme inspired by the Ginko tree that adds pops of blue, green and coral red hues complemented by



Learn More About  
the FD80 *Parabolic*

decorative forms representing the ocean, earth, passion and geometry, all of which are intended to represent life's infinite cycle peppered with the unexpected.

*Parabolic* will be on display at FLIBS October 27 – 31, see page 62. Upon delivery, the owner plans to cruise the U.S. East Coast and Caribbean aboard his new yacht. For more information on this FD80 or any of the FD Series yachts, please contact Horizon Yacht USA at +1 561 721 4850 or email [sales@horizonyachtusa.com](mailto:sales@horizonyachtusa.com). ➡





FEATURE YACHT

# Life of The Party

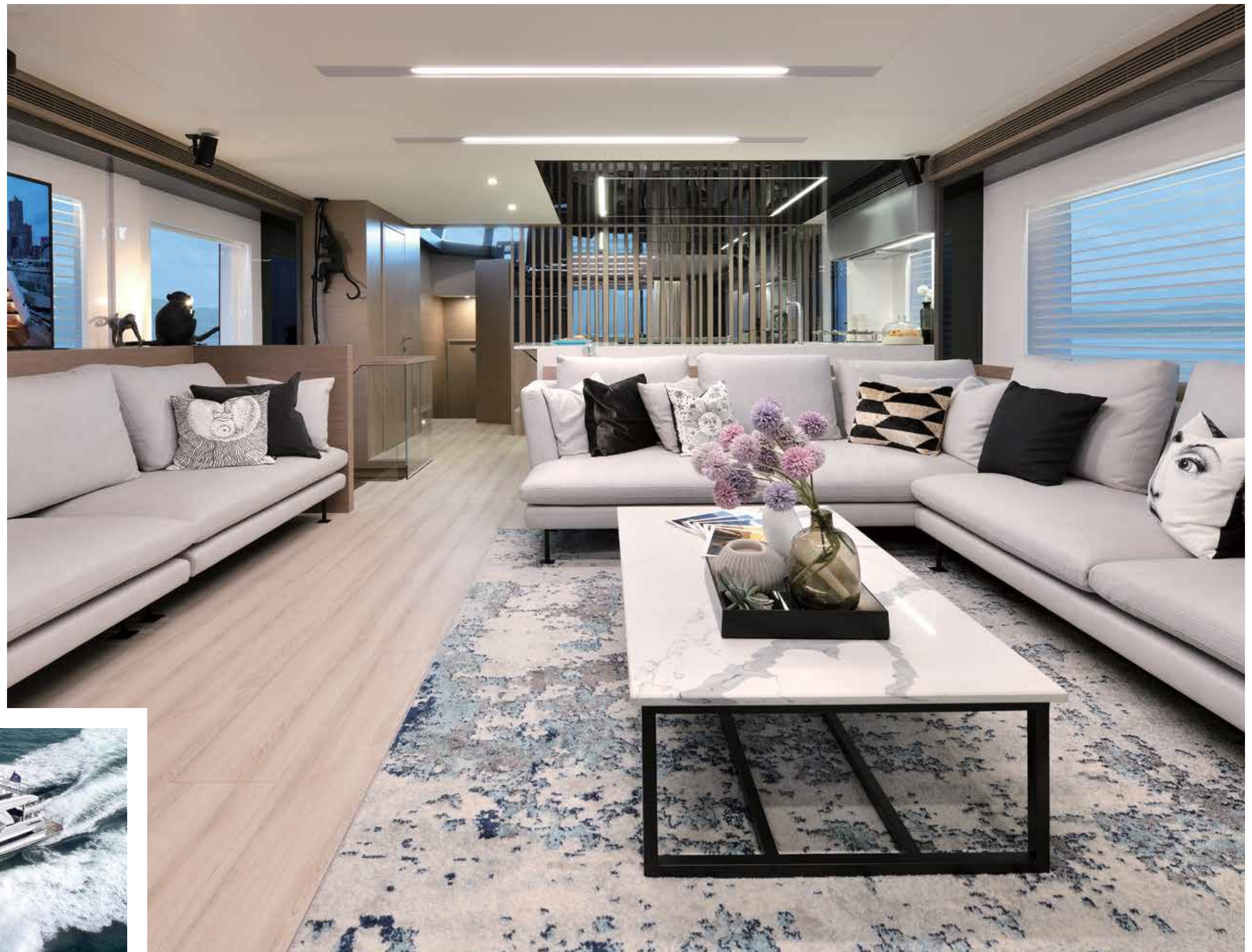
*The high-volume design of the FD75 was the perfect platform for one Taiwanese owner who envisioned a yacht meant for entertainment.*



**THESE PAGES**

The convivial interior begins with the spacious main salon, within which oversized sofas invite relaxation and conversation.

**Ask any owner who has built a boat with** Horizon and you will hear stories about how many requests and customizations were accommodated during the project. Sometimes pigeon-holed as a production builder, Horizon is neither a full production nor a full custom builder, but rather a semi-custom builder in the truest sense. Each Horizon yacht is built upon a proven platform that has been rigorously tank tested, engineered and created using the most advanced composites construction methods. Upon this platform a client can consider a variety of layouts, often taking advantage of design and engineering ingenuities that were put into place through the customizations of other Horizon owners. →







#### THESE PAGES

While the main salon and galley area appear traditional enough, the biggest customization is found furthest forward, in the area typically reserved for the main deck master stateroom.



The owner/operator-capable FD75 offers impressive interior volume for its length, and the owner of the newest one has maximized this volume to the fullest with a truly unique interior layout. Christened *Ocean Lily*, the third hull of the FD75 model has been customized from stem to stern to accommodate and entertain large parties.

The first hint at large party entertainment begins on the aft deck, which the owner had fitted with an expansive table seating 12 for both meetings and dining. The spacious main salon features dual oversized settees for conversation and relaxation, while a fully equipped galley is situated forward with a dayhead to port.



Learn More About  
the FD75 Ocean Lily



#### MASTER ENTERTAINER

The most dramatic customization on this yacht comes in the form of a simple yet unique layout configuration. Forward, the space that normally holds the full-beam, on-deck master stateroom has been designed as a Karaoke room with disco lighting. A custom oversized sofa dominates the space. After the performances, the sofa and convertible coffee tables transform into beds to sleep four guests.







## Specifications

### LOA

75' (22.86m)

### Beam

20' 4" (7.62m)

### Series

Fast Displacement (FD)

### Interior Design

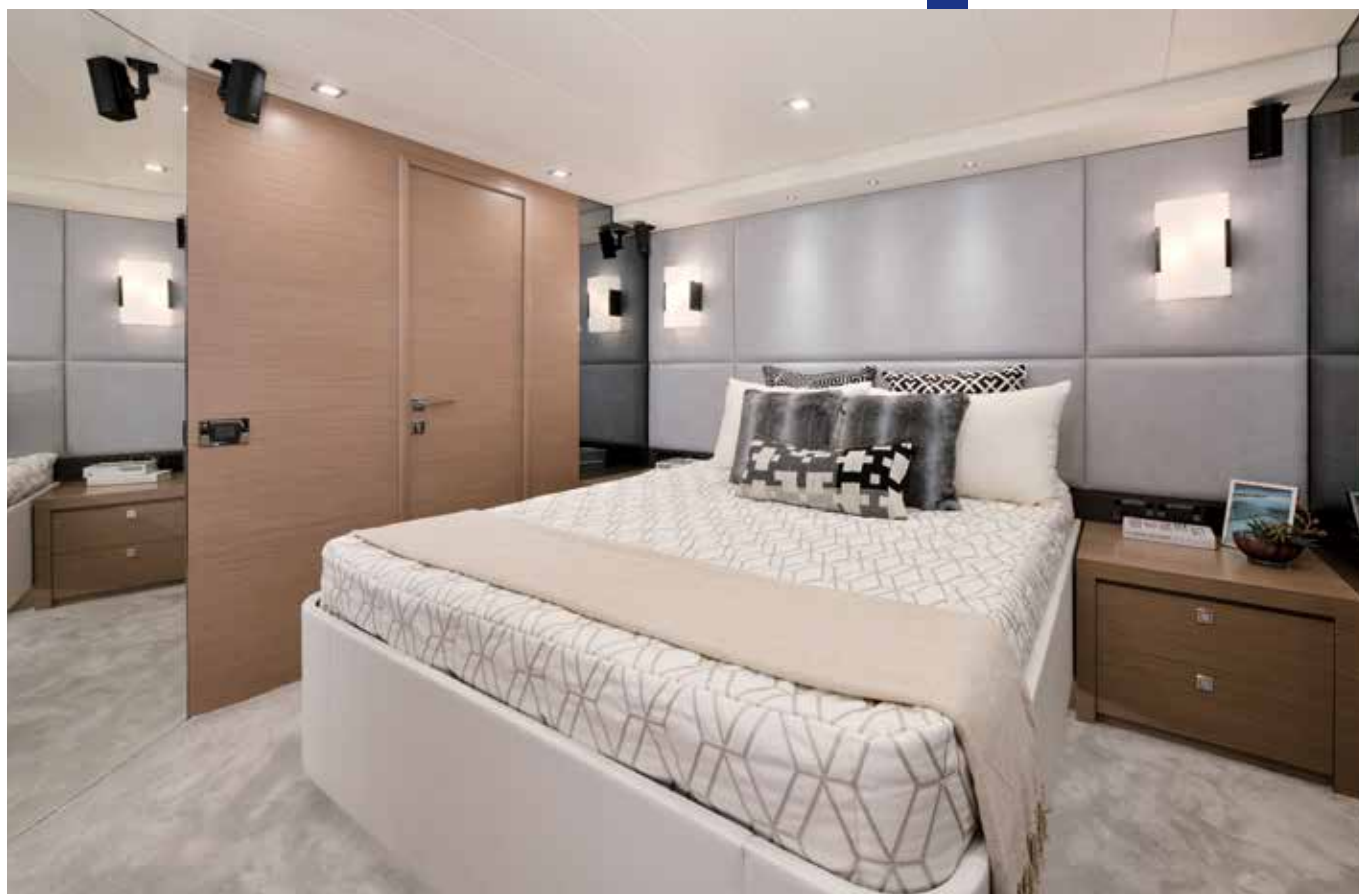
Horizon Yachts

### Exterior Styling

Cor D. Rover

### Engines

Twin MAN V8 1,200hp



Three additional staterooms designed to sleep multiple guests are situated on the lower deck, and a crew cabin and mess is positioned at the stern.

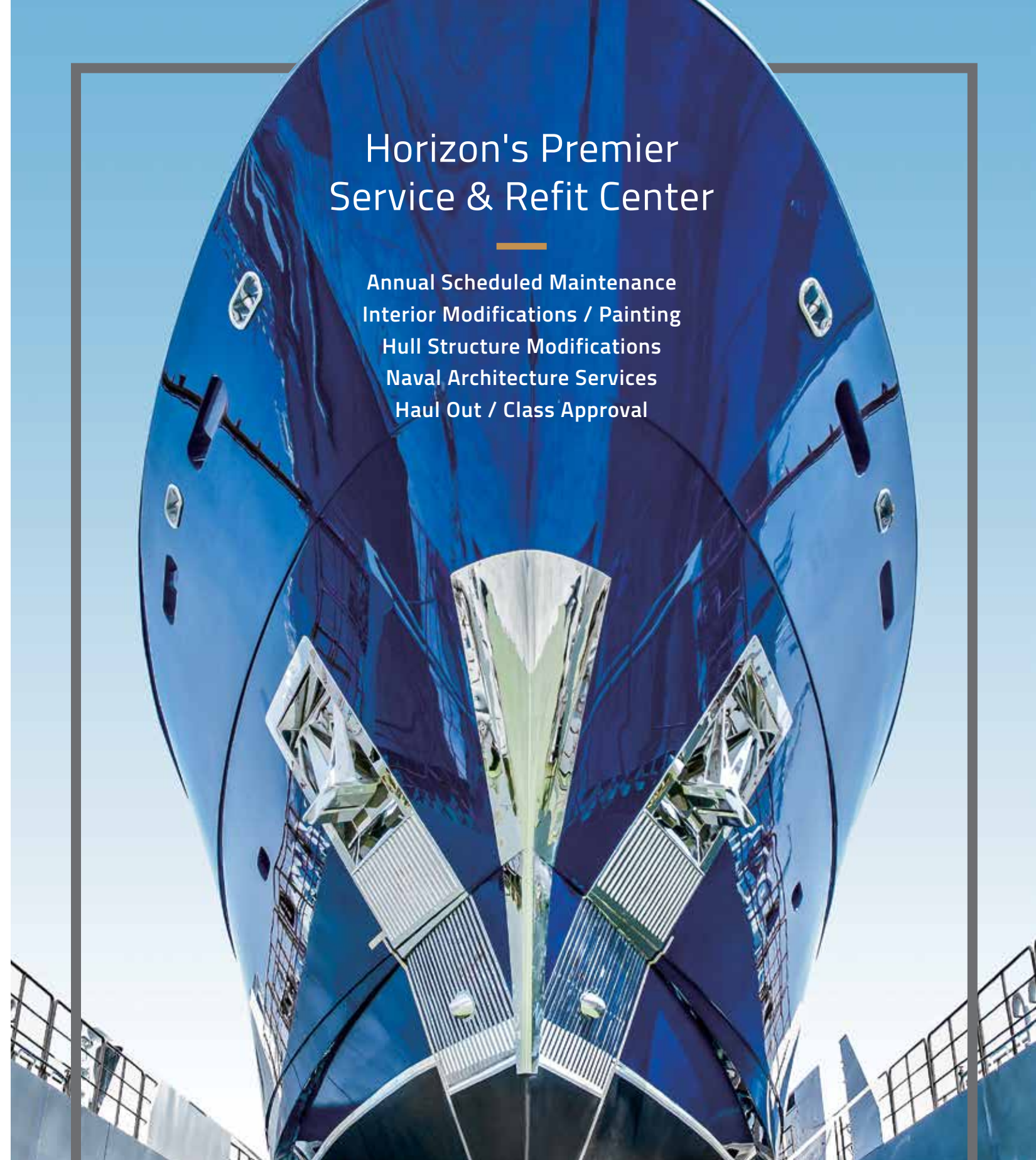
The second departure from the norm appears on the open flybridge of *Ocean Lily*. In this expansive space, which offers multiple areas for dining and lounging, the owner requested a DJ booth setup and smoke machines as well as disco lighting. All of the furniture on the decks is freestanding and multifunctional so as to accommodate a variety of activities. A total of five hotpot stations have been installed on both the main and boat decks aft and a dumbwaiter facilitates service between the galley and the flybridge.

Recently delivered, *Ocean Lily* will be berthed at Singapore's world-class ONE°15 Marina in Sentosa Cove. ➡

**THIS PAGE**  
Additional guests are comfortably accommodated on the lower deck, which is configured with three multi-functional staterooms.

## Horizon's Premier Service & Refit Center

Annual Scheduled Maintenance  
Interior Modifications / Painting  
Hull Structure Modifications  
Naval Architecture Services  
Haul Out / Class Approval



### A TALENTED NAVAL ARCHITECTURE TEAM AND A CONVENIENT MARINA LOCATION.

The Horizon Refit Center has the capacity to accommodate 100ft-plus (30m+) yachts for maintenance, repair, and refit services. The Refit Center encompasses 656ft (200m) of waterfront property on Taiwan's Kaohsiung Harbor and is equipped with a 200ft (60m) x 45ft (14m) floating dry dock with 500-ton lifting capacity and 26,000sqft (24,000sqm) of private yard space.



**HORIZON**

+886 7 860 7770  
info@horizonyacht.com



The World is Vast  
Venture Farther



## THE LONG-RANGE CRUISING V68

**EFFICIENT. VERSATILE. WITH A BEACH CLUB TO BOOT.**

Conceived as a "mini superyacht", the V68 is equipped from stem to stern with every amenity desired aboard a long-range yacht. A wide beam, vertical bow and efficient hull design lend performance and stability to this exquisite Jonathan Quinn Barnett-designed motor yacht.

DEFINE YOUR HORIZON  
V SERIES: **V68** // V72 // V80

**USA**  
+1 561 721 4850  
horizonyachtusa.com

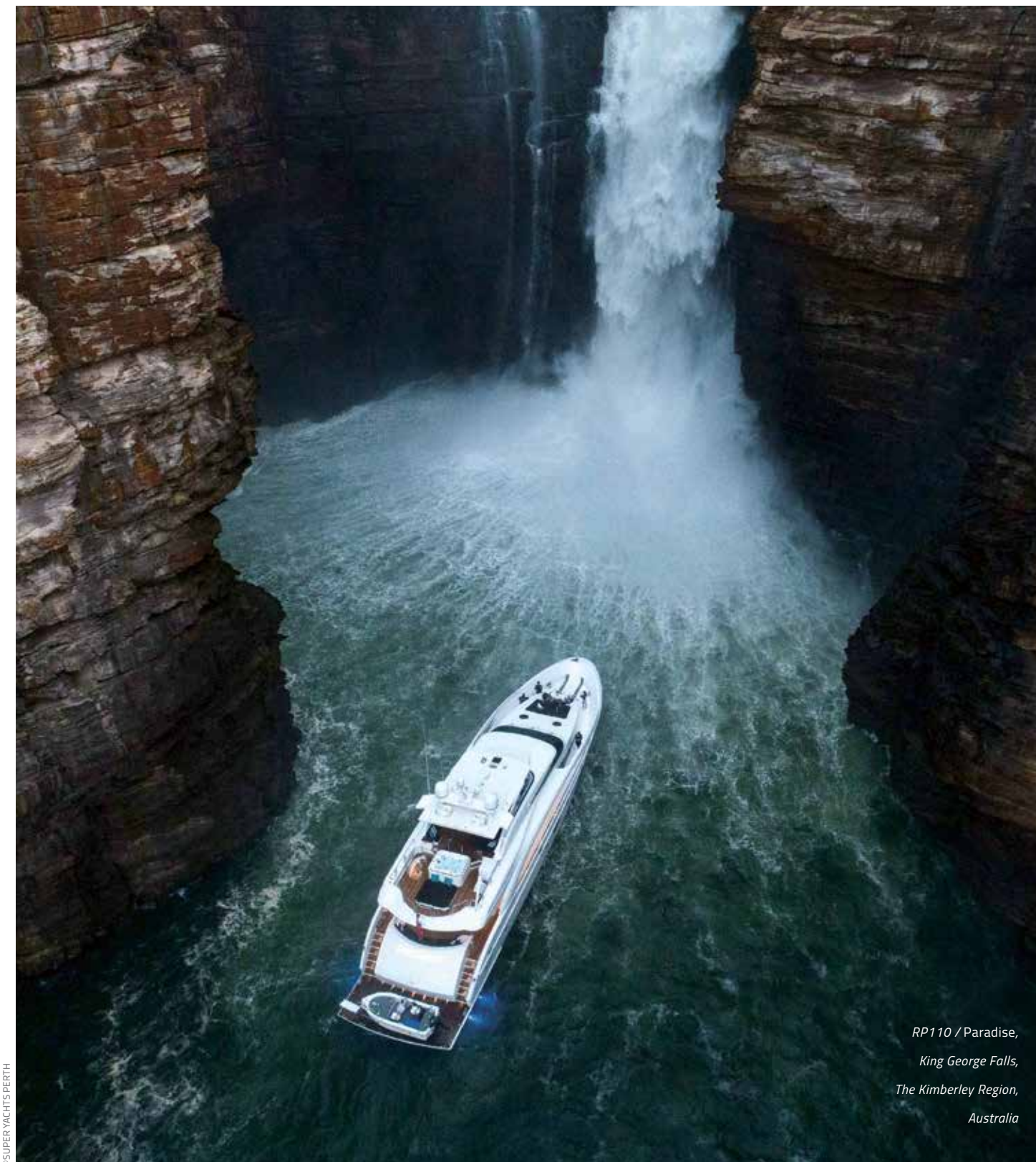
**EUROPE**  
+34 971 673 508  
horizonyachteurope.com

**AUSTRALIA**  
+61 7 5577 9009  
horizonyachtaus.com



# HORIZON LIFE

— DREAMS DEFINED. LIFE ON THE WATER. —



RP110 / Paradise,  
King George Falls,  
The Kimberley Region,  
Australia

DESTINATIONS // HORIZON OWNERS // EVENTS // TOYS & EQUIPMENT →

DEFINE YOUR HORIZON



**OWNER EXPERIENCE**

*A growing extended family led Ira and Wendy Levenshon from their 58ft Horizon to a V74, and then into their latest Satori, a Horizon E88. We spoke to them while they were enjoying a few days with their children and grandchildren aboard in Boston, Massachusetts, just before they resumed their New England cruising adventures.*

# THE PATH TO ENLIGHTENMENT





## // Stepping Stones

Originally from Chicago, Illinois, Ira moved to Florida in 1971 and bought his first boat, as one often does. “It was more of a fiberglass bathtub than a boat,” he recalls. “It had a two-stroke 25hp outboard. I sat on the gas tank and I had a compass. That’s where it started.”

And, as they often do, the boats gradually got bigger over the years. In 1981 Ira bought his first Sea Ray, a brand he stayed with for nearly 20 years. “While company support was not good, the dealer support was, so I knew that as I moved on in size corporate support was going to be very important.”

In 2004, Ira was on the hunt for his next boat and came across a 2002 Horizon 58. “That’s when I met Roger [Sowerbutts of Horizon Yacht USA],” he recalls. “He made it clear that I was the third owner and there were no warranties, but that he would be a resource for me.”

Subsequent to that, Ira says, Horizon as a company became a major support, as did Roger. “Anytime I had a question, or something needed to be done or there was something I couldn’t do myself, they were my first call. They never let me down.”

Ira owned that Horizon 58, christened *Satori*, for six years. He married his sweetheart, Wendy, on the bow of the boat at Ocean Reef in Key Largo, Florida.

**THESE PAGES**  
The Horizon E88 provides numerous spots for entertaining indoors, from the main deck salon to the formal dining and country kitchen that easily accommodates eight guests.



*“WE ARE ENJOYING OUR THIRD HORIZON BUT HAVE YET TO BUILD OR CUSTOMIZE OUR OWN. WE HAVE TURNED A FEW OF OUR VERY GOOD FRIENDS ON TO HORIZON; THEY WENT ON TO BUILD AND INCORPORATED SOME OF OUR IDEAS!”*



## // On the Path

The aftermath of the 2008 economic crisis affected yacht production worldwide, and by 2010 inventory was low and many builders, dealers and brokers were desperate for a sale to stay afloat. At a boat show, Ira and Wendy entertained an “unbelievable deal” offered by another yacht manufacturer but, having also toured a Horizon V74, they chose the Horizon.

The Levenshons took their new V74 up and down the East Coast of the U.S. several times, venturing as far north as Northeast Harbor, Maine. All in all, they put close to 3,000 hours on the boat, in all kinds of seas. Their V74 handled particularly well in rough weather during an Ocean Reef yacht club voyage to The Bahamas. “Anytime we had an issue, we had Horizon behind us – not just Roger, but the people in Taiwan as well.”

As owners often are, the Levenshons were soon ready for something bigger. A friend of theirs told them about the Horizon E88 he had seen at the 2016 boat show and wanted their thoughts on it. He bought that boat after their conversation. That owner was Jim Loomis (featured in Vol. 50) who, not long after purchasing his E88, traded it in for a brand new FD85. In a rare transaction, Ira and Wendy traded their V74 for Loomis’s E88.

“I was in the Emergency Room at the University of Miami, on the phone with Roger,” Ira recalls.

“I told him, you should never make a purchase when you’re not feeling well but he just looked at me, went back to Roger and said, ‘let’s make this happen!’” Wendy laughs.

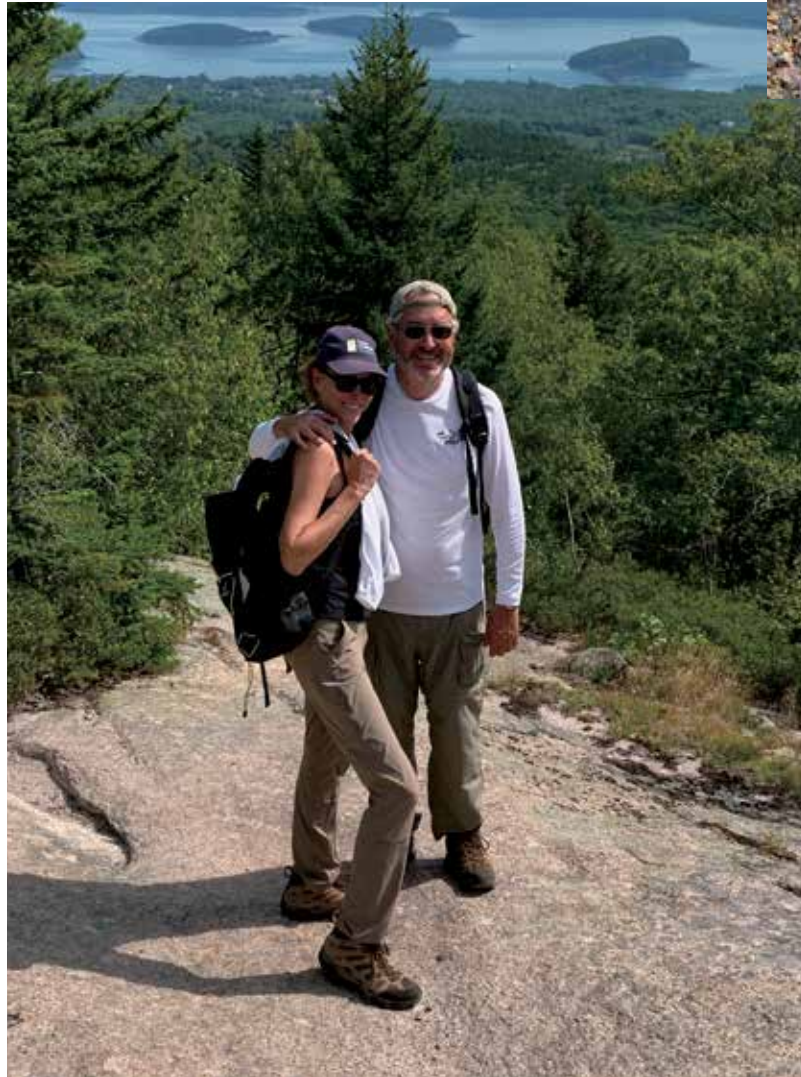


## // No Wrong Turns

Wendy and Ira have just completed their 13th summer cruising from Miami to Maine. For the first few years they would stop and explore many different ports along the way, but now they prefer to stay longer at fewer ports and seek out the more isolated, off-the-beaten-path destinations. “We’ve taken our Horizons to every state on the East Coast, from Florida to Maine, as well as Cuba, The Bahamas and the Florida Keys. We do a lot of dockage in the middle of nowhere. This year, for the first time, we went from Miami to Maine in just six days!”

After running their boats themselves, the Levenshons now have a full-time captain and stew/deck, the former being a requirement for a boat of this size. They live on the boat for six months of the year and when they return to Miami in November, keep the boat behind their condo on the beautiful Biscayne Bay.

Wendy and Ira say they have no regrets about joining the Horizon family. “Horizon builds a really good boat,” they say. “From [CEO] John Lu down, if something isn’t perfect, they will assist.”



**THESE PAGES**  
Wendy and Ira have just completed their 13th summer cruising from Miami to Maine.

Even though the Levenshons have yet to build their own boat, they share ideas with friends to incorporate into their own Horizon builds. “I built buildings as a career so I don’t want to build anymore!” jokes Ira. “But we do know that Horizon is the builder for owners who know what they want.”

“You can’t compare typical production boats with a Horizon build,” he continues. “Each series is markedly different, each yacht reflects the owner’s preferences, and each is built to perform. We’ve unintentionally found ourselves in storms and high seas aboard our Horizons, which all handled themselves very well.”

“I like the flybridge for entertaining,” says Wendy. “We have parties with up to twenty people. The aft deck, the foredeck, the master stateroom, the quality of the finishes... it’s all great! It’s a phenomenal boat.”

What’s the next step of the Levenshons’ journey? “We talk about that all the time,” says Wendy. “The FD series is voluminous and we have the dockage at home for it, but honestly we still love this boat.” As we said goodbye, Ira and Wendy continued on their journey, which will bring them back to Florida in time for the Fort Lauderdale International Boat Show at the end of October. ➡







## A CAPTAIN'S PERSPECTIVE

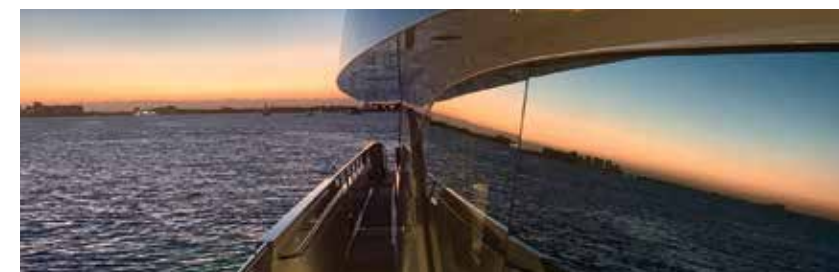
*Our editors caught up with longtime Horizon captain Paul deClaire in the engine room of the RP120 Xanadu, where he shared his thoughts on the "Horizon Experience" from a captain's perspective.*

BORN AND RAISED IN FORT LAUDERDALE, FLORIDA, CAPTAIN PAUL DECLAIRE SPENT HIS FORMATIVE YEARS ON THE WATER, AND TOOK HIS FIRST JOB AS A MATE ON THE SHUTTLE BOAT FOR THE BOCA RESORT HOTEL & CLUB WHEN HE WAS A TEENAGER. IN TIME HE GOT HIS CAPTAIN'S LICENSE AND EVENTUALLY BRANCHED OUT TO RUNNING LARGER PRIVATE YACHTS.



### ***Q: What was your first experience with Horizon?***

A. I joined an owner at the tail end of the build of his 70ft Horizon and flew to the yard in Taiwan for the pre-delivery inspection and sea trial. That same owner went on to build a Horizon 82 and I oversaw the entire build of that one and once again traveled to the yard for the sea trial. A few owners and boats later, I landed with the owners I'm currently with now, running their 86ft E Series Horizon called *Xanadu*.



**THIS PAGE**  
The RP120 *Xanadu* spent the summer cruising New England.

A. When it came time for these owners to move up in length, we went from a 100ft Hatteras to a Westport 112 before they decided to buy a catamaran and sail around the world with their young family. After that, they took a break from boating. But when they got back in touch with me, they didn't want to wait and found this RP120 immediately.

### ***Q: How did you end up aboard the RP120?***



## Q: What was it about the RP120 that was so appealing to the owners?

A. Because these owners had owned other boats, they were knowledgeable about the market, but they never could find the exact features they were looking for. They love the water, so the beach club and the hi/lo swim platform of the RP120 were big selling points. This was a 2017 spec boat that we purchased from the original owners. We put very little into it, painted the hull grey, and that was about all we had to do.

### THESE PAGES

It was the yacht's layout, beach club and exterior deck spaces that appealed to the active family.



A. The E Series and RP Series are totally different animals, the smaller boats being more performance oriented and the larger offering more space and stability. The RP has been very easy to run. A lot of these boats are very good handling boats; this one is a big boat that drives very easily. I drove the RP110 in Bimini a few years back and was really impressed with the way that handled.

## Q: You've run many boats over your career, including several Horizon builds. What are some of your favorite features?

## Q: What do you think sets Horizon apart from other builders?

A. I try to spread the word about Horizon because I like them. The yard is impressive, from the technology, to the production, to the speed at which they work. They are very custom—if you get in on the build you can really do a lot in terms of customizations. Horizon builds very high quality boats at a reasonable price and they pay attention to things like accessibility and maintenance. The service is good and everyone—from the yard to the team in the US—stands behind the product long after warranty. It's a really good, strong build.

## A Captain's Favorite Features



Captain Paul lists some of his favorite features aboard the RP120, Xanadu

- Ease of handling
- Aft deck remote drive station – perfect when towing
- A/C in the engine room
- Terrific access in the engine room
- Can be run with minimal crew (2 plus captain)
- Huge flybridge deck
- Exceptionally fair molds for great gel coat finish
- Bulletproof Caterpillar power
- Many redundant systems and high-quality components throughout
- Most replacement parts and components easily sourced in the U.S.
- Lots of space for toys in garage, swim platform and boat deck. We carry two wave runners, a Williams jet tender, two SeaBobs, two e-Foil Flightboards, kite boarding gear, towables/inflatables, surfboards and more.

## Q: What's next?

A. We just did a trip up to the Newport area and we had zero problems. That's saying a lot for a trip that long. Horizon yachts are a pleasure to run and I like interacting with the entire team. We don't know what's coming in the future but I'm really looking forward to the next Horizon I could run. ➡





**YACHT NAME:** SLO GIN  
**MODEL:** FD87 Skyline  
**OWNERS:** American

*There is nothing quite as exhilarating as jumping in tandem off the top deck of your yacht while on your family vacation,*

as demonstrated in this picture sent by the owners of the FD87 *Slo Gin* in the Exumas. Send your images to [marketingcenter@horizonyacht.com](mailto:marketingcenter@horizonyacht.com). ➡

# —ON THE— CALENDAR

## October

Barcelona Boat Show  
 Barcelona, Spain  
 October 12 to 17, 2021

Fort Lauderdale Int'l Boat Show  
 Fort Lauderdale, Florida  
 October 27 to 31, 2021

## February

Seattle Boat Show  
 Seattle, Washington  
 February 4 to 12, 2022

Miami Yacht Show  
 Miami, Florida  
 February 16 to 20, 2022

Horizon Yacht USA Winter Showcase  
 Fort Lauderdale, Florida  
 Dates to be announced

## March

Palm Beach Int'l Boat Show  
 Palm Beach, Florida  
 March 24 to 27, 2022

## April-May

Palma International Boat Show  
 Palma de Mallorca, Spain  
 April 28 to May 1, 2022

## May

Sanctuary Cove Int'l Boat Show  
 Sanctuary Cove, Australia  
 May 19 to 22, 2022



## July - August

Sydney International Boat Show  
 Sydney, Australia  
 July 28 to Aug 1, 2022



# Upcoming Boat Shows: Three FD Models, the New E81, and Two PC Models at FLIBS



VISIT  
OUR DISPLAY

LOCATION:  
RED ZONE, F DOCK  
SLIPS 600-606

**From October 27th – 31st, Horizon Yachts will showcase its** high-volume innovation during the Fort Lauderdale International Boat Show (FLIBS) with an exciting lineup of yachts that include the debuting E81, several FD Series yachts and two Power Catamarans.

The brand new E81 model features a streamlined exterior profile that defines the E Series atop a beamy and voluminous hull. While a four-stateroom configuration is standard, the E81 on display has been customized with three staterooms including a full-beam master suite and an office/library. It is also the first E81 to feature an enclosed skylounge configuration.

Also appearing at the show is a brand new FD80 Skyline, a model that has carved out a niche within the Cor D.

Rover-designed FD Series among active owners who appreciate its build quality, four-stateroom layout and ample deck areas for lounging and entertaining. Built for a first-time owner, this latest FD80 features an enclosed skylounge configuration with a full-beam master stateroom on the main deck and three guest cabins on the lower deck, with crew quarters for four and a beach club situated aft. (Read the full feature on the FD80, *Parabolic*, on page 28.)

One of the most popular models in the FD Series, the FD87 epitomizes the mid-range yacht with its customizable layout and multi-functional amenities. Accommodating 10 guests in a four-or five-stateroom layout that includes an on-deck master suite, the FD87 packs a tremendous amount of useable space into a 23' 3"

HORIZON E81 // WORLD DEBUT



beam. Specified in the Skyline (enclosed bridge) configuration, the FD87 on display showcases a high-volume interior with numerous options for outdoor entertainment, from the foredeck lounging area to the beach club and hi/lo swim platform.

Rounding out the Horizon Yachts showcase is the tri-deck FD92, a model derived from one client's request for both an enclosed skylounge and an open flybridge. Offering a five-stateroom layout with an on-deck master stateroom, crew quarters and a beach club, the FD92 features a voluminous interior with an open-plan salon with dayhead aft, and formal dining and galley amidships. Ingenious amenities are incorporated throughout the triple-level yacht, and the exterior areas are plentiful.

Two brand new Horizon PowerCats will highlight the Horizon Power Catamaran display at the show. The recently launched PC60 showcases an open salon layout with two large staterooms in the portside hull and the master suite occupying the starboard, while the brand new PC52 offers an inviting and open layout with a galley aft, salon forward configuration, an open flybridge and spacious guest quarters comprised of a master, queen and twin in the hulls.

To schedule your appointment during the show, please contact Horizon Yacht USA at +1 561 721 4850 or email [sales@horizonyachtusa.com](mailto:sales@horizonyachtusa.com). ➡



**THIS PAGE**  
The brand new E81 model will make her world debut alongside an exciting selection of FD models.



## WHAT'S ON DISPLAY



E81

LOA: 84' 7" (25.78M)  
BEAM: 20' 6" (6.25M)  
GUESTS: 6 IN 3 STATEROOMS  
ENGINES: 2 X CAT C32A 1,700HP



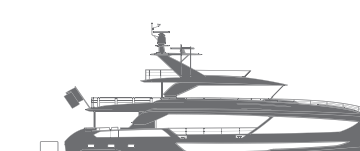
FD80 SKYLINE

LOA: 80' 7" (24.5M)  
BEAM: 22' 8" (6.91M)  
GUESTS: 8 IN 4 STATEROOMS  
ENGINES: 2 X MAN 1,300HP



FD87 SKYLINE

LOA: 90' 1" (27.4M)  
BEAM: 23' 3" (7.1M)  
GUESTS: 10 IN 5 STATEROOMS  
ENGINES: 2 X MTU 1,600HP



FD92 TRI-DECK

LOA: 94' (28.66M)  
BEAM: 23' 3" (7.1M)  
GUESTS: 10 IN 5 STATEROOMS  
ENGINES: 2 X MTU 1,600HP



PC52

LOA: 53' 2" (16.22M)  
BEAM: 22' (6.71M)  
GUESTS: 6 IN 3 STATEROOMS  
ENGINES: 2 X CUMMINS QSB 6.7 550HP



PC60

LOA: 61' 7" (18.6M)  
BEAM: 24' 6" (7.31M)  
GUESTS: 6 IN 3 STATEROOMS  
ENGINES: 2 X CUMMINS QSM11 705HP



Destination Spotlight

# DISCOVER AIRLIE BEACH

*As the gateway to the Whitsunday Islands and the Great Barrier Reef, Airlie Beach is the perfect base from which to explore these magnificent wonders.*



**THIS PAGE**  
Famous for its sunsets, Airlie Beach is a welcoming coastal town from which one can embark on numerous excursions to the Great Barrier Reef and the Whitsunday Islands.

It's Australia's answer to the Caribbean. The breathtaking tropical region that comprises the Great Barrier Reef, Hamilton Island and the Whitsundays extends just 30-some miles off the coast of Queensland. A patchwork of over 70 bold, green islands make up the Whitsunday chain that dots the turquoise sea along Australia's northeast coast, each offering its own tempting taste of natural splendor, from deserted fine-sand beaches to protected anchorages, coral reefs to towering granite peaks, lush bushland and colorful flora, fauna and sea life.

Perfectly situated in the heart of the Whitsundays on the mainland, the charming coastal town of Airlie Beach has long been the central hub of the region as well as a popular holiday destination. While the village first appeared on the map in 1936, it was not until the 1970s that the region began catering to yachts and yachting tourism, with the real boom occurring a decade later.

While it offers a convenient gateway for those wanting to explore the incredible tropical region and marine world surrounding it, Airlie Beach itself is worth discovering. The year-round tropical weather, palm-fringed beaches, waterfront parks, al fresco restaurants and vibrant markets inspire you to go with the flow and soak up the laid-back vibe. Nearby, you'll find tropical rainforest and waterfalls in Conway National Park, while the sparkling waters of the Coral Sea offer plenty of adventures, from sailing to snorkeling to diving one of the world's great wonders.

### Airlie Beach Lagoon

Centrally located and free to the public, the manmade Airlie Beach Lagoon offers a sting-free beachfront environment from which one can spend the day relaxing, swimming and sunbathing. Surrounded by grassy knolls and landscaped gardens, the Lagoon is the focal point of the area and is a perfect spot to take in the scenery and relax with a picnic lunch and a good book.



© IMAGES COURTESY OF ADOBE STOCK

### Great Barrier Reef

One of the great wonders of the world, the Great Barrier Reef is the very picture of natural splendor, where color and life collide in brilliant harmony in a magnificent undersea world. Comprising more than 3,000 thousand individual reef systems and covering some 135,000 square miles, the Great Barrier Reef is home to the most intricate and varied expanse of living corals in the world. Ideal for diving and snorkeling, this natural feat of engineering dates back some 450 million years and is home to more than 1,500 species of fish and myriad wildlife, including sea turtles, giant clams, dolphins and humpback whales.

A number of Great Barrier Reef excursions and adventures are available from Airlie Beach, including the newly opened Reefworld that offers both on-water and underwater overnight accommodations for a truly magical Reef experience.



GREAT BARRIER REEF



**THIS PAGE**  
Wildlife abounds both on land and under the sea; the Great Barrier Reef being home to 1,500 species of fish alone.



© TRAVEL

### Conway National Park

This park includes the rainforest-clad Conway Peninsula and protects the largest area of lowland tropical rainforest in Queensland outside Tropical North Queensland. Hoop pines grow on coastal ridges and in damp gullies, emerging above the rainforest canopy. Rugged, steep, rocky cliffs provide a spectacular 35km-long backdrop to the Whitsunday Passage and islands. The park's vegetation is very similar to that on the Whitsunday islands because thousands of years ago the sea level rose, drowning coastal valleys and creating the islands. For thousands of years, the Ngaro and Gia people roamed these forests, harvesting riches of the land and the adjoining sea country. Today the adjacent waters are protected in marine parks. Day excursions from Airlie Beach provide opportunities for bushwalking, hiking, beachcombing and more.





WHITSUNDAY HILL INLET

©IMAGES COURTESY OF ADOBE STOCK



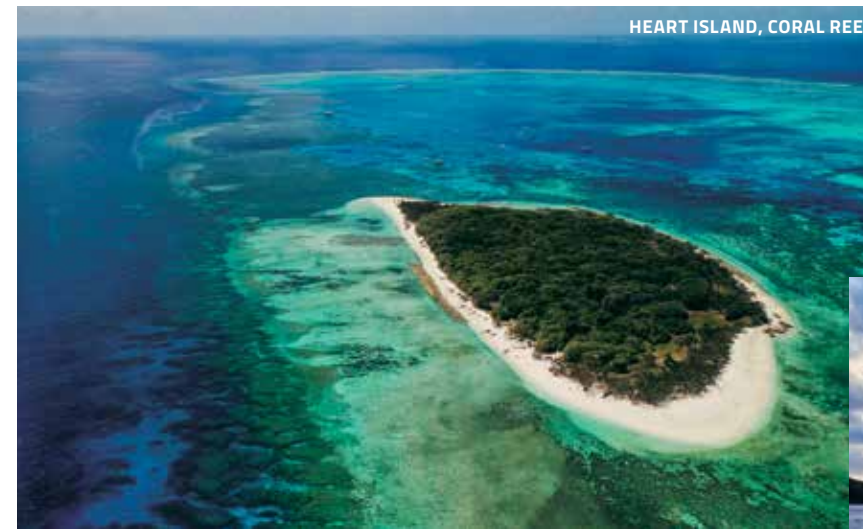
**THESE PAGES**  
Nature, wildlife and cuisine collide in breathtaking harmony in this region of the world, which is well worth the visit.



MANDALAY HOUSE

©MANDALAY-HOUSE

**LEFT**  
The mesmerizing Hill Inlet provides an exquisite display of nature to all who have the fortune of viewing the changing tides.



HEART ISLAND, CORAL REEF

©RACHAEL KAHUI

anchorage if the weather decides to become unpleasant. The area's high season is between May and October, while July is the coolest month and January is the warmest. The southeast tradewinds blow from March to September and the wet season is normally between January and March. Overall, excellent weather conditions dominate this beautiful area of the world, and Airlie Beach is a fitting hub from which your regional cruising adventures can begin or end. ➡



©FRAYL

### *Hill Inlet*

A short boat ride from Airlie Beach is Whitehaven Beach, situated on the largest and most famous of the Whitsunday Islands. At the northern end of this gorgeous beach is Hill Inlet, an absolutely breathtaking spit of white sand that offers a melodic mélange of blue hues as the tide changes. Best viewed from the lookout at Tongue Point on Whitsunday Island when the tide is low, Hill Inlet is a must for beachgoers, sunbathers and nature lovers alike.

### *Wildlife*

Some islands in the Whitsunday region are home to the wallaby, the kangaroo's smaller relative, as well as goannas, which are large lizard-like reptiles. Bird watchers can scan the sky and trees for sea eagles, kites and ospreys, as well as cockatoos and cackling kookaburras that will make their presence known from time to time.

For a truly memorable experience, late August brings with it the abundance of humpback whale sightings who migrate to the area during June and July before returning south in September and October.

From underwater craters to myriad coves and bays, to deserted islands, magnificent beaches, and exquisite natural splendor, the Whitsunday islands provide endless opportunities for above-, on-, and under-the-water exploration. One of the many appealing features of this area is the many islands, coves or bays that provide sheltered





# Brand New Inventory

## New builds and new opportunities on the horizon

AVAILABLE IN U.S. SPRING 2022



### HORIZON FD110 TRI-DECK MOTORYACHT

- Superyacht styling with tri-deck design
- Crew quarters for six
- High-volume interior
- Enclosed skylounge w/ dayhead
- On-deck master + four ensuite staterooms
- Twin CAT C32A 1,900hp engines

FD SERIES: FD75 // FD80 // FD90 // FD100 // **FD110** // FD125

AVAILABLE IN U.S. SUMMER 2022



### HORIZON FD100 TRI-DECK MOTORYACHT

- Tri-deck configuration w/ beach club
- Open flybridge
- 5 spacious ensuite staterooms
- Voluminous 23' 3" beam
- Enclosed skylounge w/ dayhead
- Twin CAT C32A 1,900hp engines

FD SERIES: FD75 // FD80 // FD90 // **FD100** // FD110 // FD125

AVAILABLE IN AUSTRALIA SUMMER 2022



### HORIZON FD90 SKYLINE MOTORYACHT

- Enclosed bridge configuration
- Beach club with Hi/Lo platform
- Wide 23' 3" beam
- Twin MAN 2,000hp engines
- 5 staterooms with on-deck master
- Walkaround design

FD SERIES: FD75 // FD80 // **FD90** // FD100 // FD110 // FD125

AVAILABLE IN AUSTRALIA SPRING 2022



### HORIZON FD80 SKYLINE MOTORYACHT

- Semi-open flybridge w/ seating + bar
- On-deck master + 3 ensuite + crew
- Enclosed pilothouse w/ dayhead
- Convertible table for formal dining
- Beach club with Hi/Lo platform
- Twin CAT C32A 1,200hp engines

FD SERIES: FD75 // **FD80** // FD90 // FD100 // FD110 // FD125

AVAILABLE IN U.S. WINTER 2021



### HORIZON E90 MOTORYACHT

- Enclosed skylounge w/ dayhead
- Master with his + hers layout
- Jacuzzi, bar + seating on boat deck
- Spacious 21' beam
- Four ensuite staterooms
- Twin MAN 1,800hp engines

E SERIES: E56 // E56X0 // E62 // E75 // E81 // **E90** // E98

AVAILABLE IN U.S. FALL 2022



### HORIZON FD80 SKYLINE MOTORYACHT

- Enclosed skylounge w/ dayhead
- Spacious 23' beam
- On-deck master + 3 ensuite + crew
- Convertible table for formal dining
- Beach club with Hi/Lo platform
- Twin MAN V8 1,300hp engines

FD SERIES: FD75 // **FD80** // FD90 // FD100 // FD110 // FD125

AVAILABLE IN U.S. WINTER 2022



### HORIZON V68 MOTORYACHT

- Three guest staterooms + crew
- ABT Zero Speed stabilization
- Private crew quarters aft
- Twin CAT C18A 1,136hp engines
- Open flybridge w/ fixed windshield
- Wide 19' 5" beam

V SERIES: **V68** // V72 // V80

USA

+1 561 721 4850  
horizonyachtusa.com

EUROPE

+34 971 673 508  
horizonyachteurope.com

AUSTRALIA

+61 7 5577 9009  
horizonyachtaus.com







## Network of Operations



### Horizon Shipyard

SINCE 1987  
462,540 SQFT

#### FEATURES

YACHTS UP TO 150FT LOA  
INTERIOR DESIGN CENTER



### Atech Composites

SINCE 2000  
249,070 SQFT

#### FEATURES

COMPOSITE LAB  
TECHNOLOGY SHOWROOM



### Vision Shipyard

SINCE 2001  
124,530 SQFT

#### FEATURES

YACHTS UP TO 80FT LOA  
INTERIOR DESIGN CENTER



### Premier Shipyard

SINCE 2005  
258,330 SQFT

#### FEATURES

DELIVERY CENTER  
REFIT SERVICES



### Horizon City Marina

SINCE 2014  
YACHTS UP TO 200FT

#### FEATURES

FULL SERVICE MARINA  
WATERFRONT DINING

## Worldwide Distribution Network



## Contact Your Local Representative

### Asia

#### TAIWAN

##### Horizon Group

No. 8, Kuang Yang St., Hsiao Kang  
Kaohsiung, 812010 Taiwan, R.O.C.  
Tel: +886 7 860 7770  
E-mail: [marketingcenter@horizonyacht.com](mailto:marketingcenter@horizonyacht.com)

#### JAPAN

##### Creation Co Ltd.

13, Kitahato-Cho  
Sakai-City, Osaka, Japan  
Tel: +81 722 235884  
E-mail: [info@creation-marine.co.jp](mailto:info@creation-marine.co.jp)

#### HONG KONG

##### Horizon Yachts (HK) Ltd.

AML No.21, Po Chong Wan  
Shum Wan Road, Aberdeen, Hong Kong  
Tel: +852 2873 2877  
E-mail: [mariana@horizonyachthk.com](mailto:mariana@horizonyachthk.com)

#### THAILAND / MALAYSIA / SINGAPORE

##### Derani Yachts Co. Ltd

Phuket Boat Lagoon 20/37 Moo 2,  
Thepkasattri Road, Phuket, 83000, Thailand  
Tel: +66 (0)81 893 0272  
E-mail: [hakan@derani-yachts.com](mailto:hakan@derani-yachts.com)

### Oceania

#### AUSTRALIA

##### Horizon Yacht Australia

44C The Promenade  
Sanctuary Cove, QLD 4212  
Tel: +61 7 5577 9009  
E-mail: [sales@horizonyachtaus.com](mailto:sales@horizonyachtaus.com)

### America

#### USA – FLORIDA

##### Horizon Yacht USA

North Palm Beach Office (USA HQ)  
1201 U.S. Highway 1, Suite 1  
North Palm Beach, FL 33408

Fort Lauderdale Office  
Hall of Fame Marina  
435 Seabreeze Boulevard  
Fort Lauderdale, FL 33316  
Main Tel: +1 561 721 4850  
Service: +1 561 721 6068  
E-mail: [sales@horizonyachtusa.com](mailto:sales@horizonyachtusa.com)

##### The Powercat Company (PC Series Only)

2525 Marina Bay Drive West  
Fort Lauderdale, FL 33312  
Tel: +1 888 839 3071  
E-mail: [info@horizoncatamarans.com](mailto:info@horizoncatamarans.com)

### Europe & Russia

#### SPAIN

##### Horizon Yacht Europe

Avd. Ingeniero Gabriel Roca, 20  
07157 Puerto de Andratx, Mallorca, Spain  
Tel: +34 971 673 508  
E-mail: [sales@horizonyachteurope.com](mailto:sales@horizonyachteurope.com)

DEFINE YOUR  
EXPERIENCE  
PERSONAL AND  
VIRTUAL TOURS  
AVAILABLE



THE HORIZON FLEET

# Our Series Defined



PC  
SERIES

Elegant Design, Luxurious Amenities, Ultra Comfortable Cruising



EP  
SERIES

Designed to Inspire, Built to Explore



FD  
SERIES

Innovation, Efficiency, Style, and Space



E  
SERIES

Seaworthy, Sporty, Something for Everyone



V  
SERIES

Timeless, Versatile, Customizable



RP  
SERIES

Multi-Functional Exterior Areas and Superyacht Space



P  
SERIES

Superyacht Styling, Fully Customized Build







Coming Soon

# FD100 TRI-DECK

## Innovation on Every Level

Head-turning style, impressive interior volume and a new tri-deck configuration define the FD100 Tri-Deck, a five-stateroom yacht offering the ultimate superyacht experience. 2022 delivery slots available now. ➡

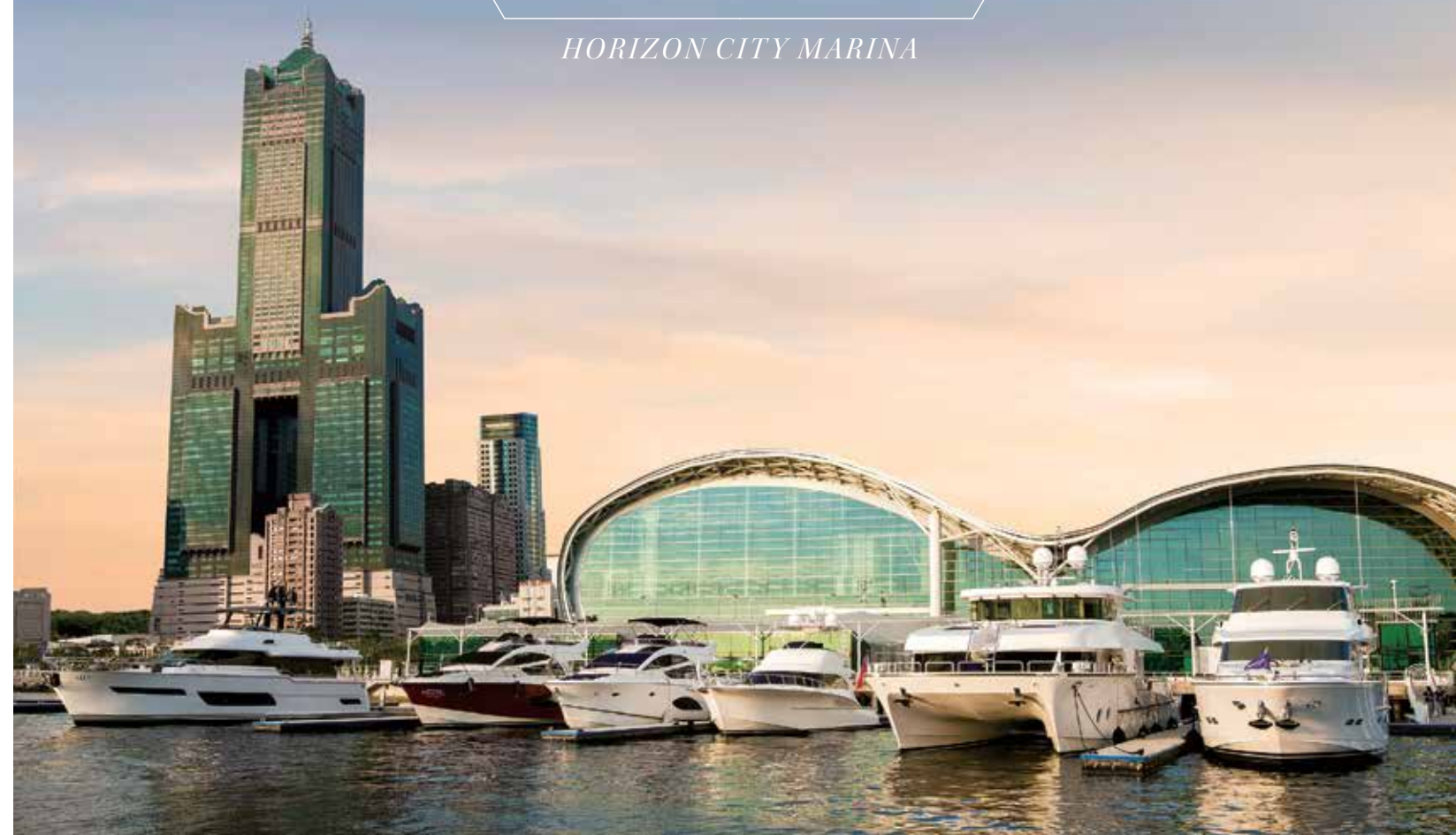
GOLD ANCHOR MARINA

WORLD CLASS AMENITIES

WATERFRONT DINING

EXPERIENCE CITY LIFE

HORIZON CITY MARINA



**A GOLD ANCHOR MARINA, A GATEWAY TO LUXURY.**  
The world class Horizon City Marina accommodates yachts up to 200 feet (60m) in 12 berths and alongside 1,100 feet of environmentally-friendly floating docks. Enjoy complete yachting services and amenities in Asia's up and coming leisure destination.

+886 963 713 993 [hcm.horizonyacht.com](http://hcm.horizonyacht.com)





# *FREEDOM LIES IN BEING BOLD*



Introduced to the world market in 2016, the Horizon Fast Displacement (FD) Series has taken the yachting industry by storm, noted for its striking style, appreciated for its well-planned layout, and praised for its exceptional stability and performance. Much of the success of this series, designed in collaboration with Cor D. Rover, can be attributed to our clients, who provide the inspiration for enhanced functionality and ingenious design ideas. The series offers megayacht living and proven performance.



**USA**  
+1 561 721 4850  
[horizonyachtusa.com](http://horizonyachtusa.com)

**EUROPE**  
+34 971 673 508  
[horizonyachteurope.com](http://horizonyachteurope.com)

**AUSTRALIA**  
+61 7 5577 9009  
[horizonyachtaus.com](http://horizonyachtaus.com)